



Chelsea Guardian
is a proud member of the
Chelsea Area Chamber of Commerce

March 15, 2024

Volume 7 Issue 11

Chelsea Guardian

Phone: 734-636-3779

guardiannewspapersmi.com



facebook.com/ChelseaGuardian

Hamilton
Publishing



**2024
CALENDAR
OF EVENTS
SCHEDULE**
INSIDE ON PAGE 7

Chelsea Outfitters Has Moved



Story and more photos on page 9.

SAVE THE DATE
SUNDAY
AUGUST 18
Gordon Hall in Dexter

Celebrate!
Farm to Table
A benefit dinner for the 5 Healthy Towns' Farmers Markets
A FABULOUS FEAST!

new moon neuro
MICROCURRENT NEUROFEEDBACK

Lasting relief from anxiety,
depression, ADHD, OCD, TBI,
insomnia, addiction, PTSD,
migraines, pain issues and more.

drug free painless FDA approved

1307 S. MAIN STREET, SUITE B • CHELSEA, MI 48118
LOCATED DOWNTOWN CHELSEA
734.210.1922
NEWMOONNEURO.COM



Daniel and the dog that inspired his foster, Mikey. Photos By Aimee Bingham

Mikey and Me, Local Dog Foster Celebrates 300 Adopted Dogs

By Aimee Bingham
anbingham@gmail.com

A while back, someone shared photos of a cute dog on Facebook. I am a dog lover, so I took note. I realized the dog rescue, as I thought it was, was located in Chelsea. Through this story I learned that Mikey and Me is

not a dog rescue, it's a dog foster. This past weekend, I had the opportunity to visit and meet Daniel DePew, the, "and me," part of Mikey and me. Mikey was the little furry bestie who inspired all this work to create a safe, happy in-between for dogs before getting continued on page 5

SAVE THE DATE
MIDWEST LITERARY WALK
SATURDAY, APRIL 20 | 1-5PM
DOWNTOWN CHELSEA

Meet Acclaimed Authors:
Roz Chast
Chitra Banerjee Divakaruni
Wade Rouse (Viola Shipman)

For event details, visit:
MidwestLiteraryWalk.org

House Concerts Bring Music to Grass Lake



Story and more photos on page 6. Photos Courtesy of Katie Geddes.

Chelsea
AREA HISTORICAL SOCIETY & MUSEUM
www.chelseahistory.org

2024 Events!

50/100 Centennial Series
Jan 8 ~ Merkel Furniture
with Tim and George Merkel
Mar 4 ~ Cole Funeral Chapel
with Allen Cole
May 6 ~ Chelsea Milling Company
with Howdy Holmes

Aug 5 ~ Chelsea State Bank
with John Mann
Sep 9 ~ Chelsea Lumber Company
with John Daniels
Oct 7 ~ Lane Animal Hospital
with Chan Lane
Nov 4 ~ CAHS 50th Anniversary
with CAHS Board

2024 Tours & Gatherings

Spring & Summer ~ To be
Announced!

Fall ~ Haunted Chelsea
December 7 ~ Holiday
Home Tour
December ~ Holiday
Potluck

Ballet Chelsea Presents CINDERELLA April 20 & 21



D&B Strategic Marketing
doris@dandbmarketing.com
Ballet Chelsea
jean@balletchelsea.org

Prepare to be swept away into a world of magic and elegance as Ballet Chelsea proudly presents its enchanting performance of Cinderella. The performances will occur on April 20 at 7 pm and April 21 at 2 pm at Chelsea High School. Tickets go on sale March 11, 2024.

In addition to the captivating performances, Ballet Chelsea is excited to offer the opportunity to experience the magic of Cinderella up close with Cinderella Teas at the Ballet Chelsea Studio on April 6 and 7 at 2 pm both days. Open company rehearsals will be happening concurrently with the tea party. Everyone is invited. Tickets for the Cinderella Tea also go on sale on March 11, 2024.

This classic fairytale comes to life through the artistry and skill of Ballet Chelsea's talented Artistic Director, Michelle Quenon, and dancers. Audiences of all ages will enjoy a spellbinding journey through the beloved story of Cinderella, where dreams really do come true. With stunning choreography, dazzling costumes, and an enchanting musical score, this production promises to captivate hearts and inspire imaginations.

Cinderella, a timeless tale of hope, kindness, and the triumph of love over adversity follows the story of a young girl who, despite facing hardship and mistreatment, remains resilient and true to herself. With the help of a fairy godmother, Cinderella's ordinary world transforms into a realm of magic and possibility.

"We are thrilled to bring the enchant-

ing story of Cinderella to life on stage," said Michelle Quenon, Artistic Director of Ballet Chelsea. "This timeless tale resonates with audiences of all ages, reminding us of the power of kindness, courage, and the belief that anything is possible. With our talented dancers and creative team, we have crafted a production that is sure to delight and inspire."

Don't miss your chance to experience the magic of Ballet Chelsea's Cinderella. Performance dates April 20 at 7 pm and April 21 at 2 pm at the Chelsea High School. And Cinderella Tea April 5 and 6, 2 pm both days, at Ballet Chelsea Studio. Tickets will be available online on March 11 at www.balletchelsea.org/tickets/.

For more information about Ballet Chelsea and its upcoming performances and classes, visit Ballet Chelsea's website, www.balletchelsea.org.

As a 501(c)(3) non-profit, Ballet Chelsea's mission transcends the stage, aiming to shape resilient individuals through impeccable training and performance artistry while giving back to the community through the transformative power of arts education and outreach. visit www.balletchelsea.org.



Photo courtesy of Bessom Photography

WASHTENAW UNITED DIVISION 2 STATE FINALS



Washtenaw United earned a spot in the Division 2 State Finals Wednesday evening with a 5-1 victory of host-team Regina/Lutheran North in the Michigan Girls High School Hockey League (MGHSHL) playoffs. Regina finished the regular season undefeated in league play, earning the top seed in the playoffs, while the United finished 8-3, good for 4th place in the standings. Washtenaw defeated Sacred Heart on Saturday 7-0 in the Quarterfinals.

The United applied the pressure from the start, dominating play early and outshooting Regina early in the first. Regina was called for a tripping at 9:24, setting up the power play for the United. On the

power play, Veronica Holmstrom (Dexter, '27) swept the puck behind the net after getting checked to the ice by Regina. Grant picked it up and stepped out in front, beating Regina goalie Kaitlin Garrett with a tough angle shot with 7:51 to go in the first.

The score would remain 1-0 heading into the 2nd period. Early on in the 2nd, with a faceoff to the Regina goaltender's right, Cecilia Henriksen (Chelsea, '24) would win the faceoff to Sam Wawzysko (Saline, '24) on the outside, who would hand the puck off to defenseman Lilly Schlack (Saline, '26). Schlack drove low down the boards cutting to the net at the goal line finding Henriksen in front.

Henriksen got a shot off, stopped by Garrett, but gathered her rebound and buried it glove side at 13:59.

Regina would answer with a shorthanded goal. Ella Barnhard picked up the puck at her blue line, skated through the neutral zone, and drove the Washtenaw net wide, beating Washtenaw Goalie Trista Tracy (Chelsea, '25) with a high shot over her blocker to cut the United lead in half. Tracy would turn aside 13 Regina shots before the night was over.

Before the end of the 2nd, at the 2:47 mark, Grant would beat the Regina defenseman to the puck just inside the Washtenaw blue line. Grant had speed exiting the zone and went untouched on a breakaway and beat Garrett with a low shot between the legs.

Washtenaw would successfully kill off a 4-minute power play, interrupted by 4 on 4 hockey thanks to a

continued on page 11



**Residential
& Commercial
Licensed & Insured
28 Years
in Business**



Ann Arbor and Jackson Showrooms

LET US HELP!
Call or visit today

JACKSON
517.784.0463
1710 E. High St.

ANN ARBOR
734.882.2137
6055 Jackson Rd.

billywhiteroofing.com | Commercial & Residential
Licensed & Insured



**Individual and
Couples counseling**
"Specializing in the concerns
of Adolescence"

- Depression
- Anxiety
- ADHD
- High functioning Autism



Namaste Family Services, LLC
Michael Patterson, LMSW
734-231-0659
mpatterson.msw@gmail.com
namastefamilyservices.org

Serving Western Washtenaw and Jackson counties

**UMRC
PORTER HILLS
Foundation**

"Every day, I am thankful
for people like you who
support the Benevolent
Care Fund."



Your gift to the UMRC-Porter Hills Foundation
Benevolent Care Fund means the world to our qualified
residents who have outlived their resources.
Even better, your gift will be matched, dollar for dollar!

Make your secure online donation **TODAY** at
Foundation.UMRCPH.org
Or, to learn more, call **734.433.1000 ext. 7397**

April Read & Seed: A Fun Event for Seniors and Preschoolers



to connect with little children. The positive interactions with seniors help boost kids' self-confidence.”

Sharing a campus at the Washington Street Education Center affords the Chelsea Senior Center members and the preschoolers this unique opportunity to easily connect in the garden. Teachers bring their students back to check on their crops and taste early produce. The ultimate excitement is when food from this earliest Read and Seed planting activity is used in Camp Gabika summer day camp cooking classes and by seniors who enjoy the senior center's nutritious daily lunches and free farm stand.

Volunteers are needed throughout the spring-to-fall growing season to aid in the sowing, harvest and upkeep of the garden and hoop house. Contact

teracting with young children are invited to volunteer to read garden books to preschoolers and guide them on the sowing of seeds. “The kids are enthusiastic and curious gardeners,” says Laura Noble, long-time volunteer for the intergenerational garden. “It's always a treat for us seniors



the Chelsea Senior Center to volunteer at (734) 475-9242 or at connected@chelseaseniors.org. Questions? Con-

tact Sharon Kegerreis, Chelsea Senior Center Outreach and Connections Coordinator, at (734) 475-9242.



Soon after spring's arrival, Chelsea Senior Center's Trinh Pifer Intergenerational Garden will be buzzing with the Read and Seed activity shared by seniors and Chelsea Community Preschool students. Read & Seed, April 2 and 3, kicks starts Chelsea Senior Center's intergenerational programming for the garden season. Seniors who love in-



Cole Funeral Chapel

214 E. Middle St. • Chelsea • (734) 475-1551

Cole Funeral Chapel is a family-owned funeral home committed to caring for your family. Our mission is to meet your needs whatever they may be. We provide a wide range of services, including cremation, green burial, and traditional funerals.

www.colefuneralchapel.com



Allen C. Cole, Funeral Director
& Wendy Cole Office Manager



**Laura Perkins
Animal Behavior**

CPDT-KA, M.S. Applied Behavior Analysis

www.lauraperkinsanimalbehavior.com
lauraperkinsanimalbehavior@gmail.com
309-370-8233

Savings in Chelsea



Chelsea Consignment

QUALITY APPAREL & HOME DECOR

CURRENTLY ACCEPTING:
We are currently accepting Spring clothing and accessories. Anything that can be worn over the next 60 days.

Designer and Name Brand Labels Available

New Hours
Mon-Wed 10-5
Thur-Sat 10-6
Sun 12-5

104 E Middle Street Suite 1A
Chelsea, MI 48118
734-433-9730
www.chelseaconsignment.com





Serving The Chelsea Area Since 1951
(734) 433-1831
PROMPT SERVICE!

- RESIDENTIAL - COMMERCIAL - INDUSTRIAL -

No Job Too Small or Too Big

COMPLETE EXCAVATING SERVICES

General Excavating - Earth Moving - Trucking
Screened Top Soil - Sand - Gravel Driveway
Landscape Materials - Basements - Site Development

SEPTIC SYSTEM SERVICE

Septic Tanks Cleaned - Installed - Repaired
Drainfield Installed - Repaired
Other Excavating

<http://www.bollinger-septic.com/>

Chelsea Guardian

For Classified,
Church Directory
or General Advertising
Call: 734-636-3779 or email
tomchelseaguardian@gmail.com
or charlachelseaguardian@gmail.com



Please like and share our
Facebook Page: Chelsea Guardian

Mission Statement:
Hard work, good work and creating
and fostering great relationships are
the keys to community success.



SAVINGS IN CHELSEA

YOUR AD HERE

2x3 for \$50 per week, 4 week run = \$200 total
2x2 for \$25 per week, 4 week run = \$100 total

Call: 734-636-3779 or email
charlachelseaguardian@gmail.com

SAVINGS IN CHELSEA

YOUR AD HERE

2x3 for \$50 per week, 4 week run = \$200 total
2x2 for \$25 per week, 4 week run = \$100 total

Call: 734-636-3779 or email
charlachelseaguardian@gmail.com

SAVINGS IN CHELSEA

YOUR AD HERE

2x3 for \$50 per week, 4 week run = \$200 total
2x2 for \$25 per week, 4 week run = \$100 total

Call: 734-636-3779 or email
charlachelseaguardian@gmail.com

SAVINGS IN CHELSEA

YOUR AD HERE

2x3 for \$50 per week, 4 week run = \$200 total
2x2 for \$25 per week, 4 week run = \$100 total

Call: 734-636-3779 or email
charlachelseaguardian@gmail.com

SAVINGS IN CHELSEA

YOUR AD HERE

2x3 for \$50 per week, 4 week run = \$200 total
2x2 for \$25 per week, 4 week run = \$100 total

Call: 734-636-3779 or email
charlachelseaguardian@gmail.com

Meet Acclaimed Authors During National Reading Month



CHelsea DISTRICT LIBRARY **ENGAGE. INSPIRE. EQUIP.**
Shannon Powers,
Head of Information Services
Virginia Krueger,
Head of Marketing & Communications
734-475-8732 x 229
vkrueger@chelseadistrictlibrary.org

In honor of National Reading Month, each March Chelsea District Library (CDL) presents Authors in Chelsea, a two-day event featuring nationally recognized, award-winning children's authors. In partnership with the Chelsea School District, Authors in Chelsea includes assemblies and workshops for more than 1,000 Chelsea students in grades 1–6, bringing quality authors into classrooms to inspire students and encourage a love of reading and writing. To prepare for the

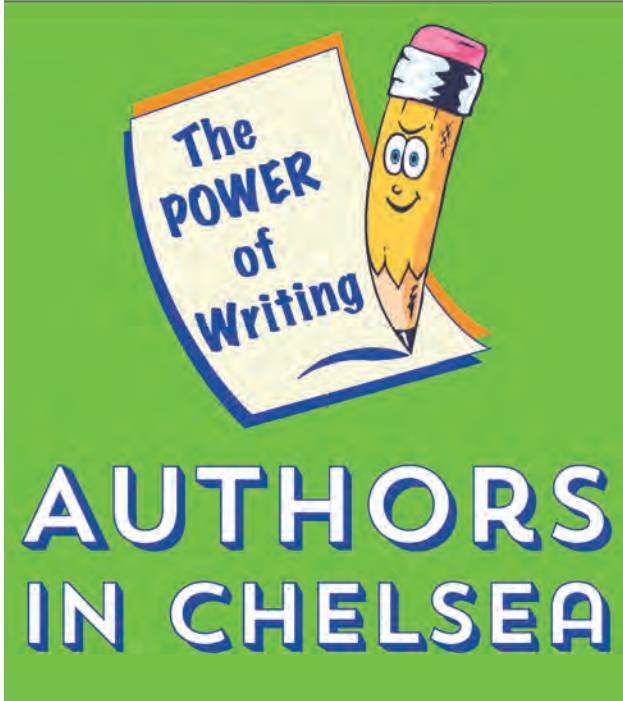
March 19–20 event, hundreds of books by visiting authors were delivered to Chelsea School District courtesy of Chelsea Education Foundation. This year's visiting authors include Saadia Faruqi, Beth Vrabel, and K.A. Holt. Saadia Faruqi is a Pakistani American author and interfaith activist who writes books for readers of all ages. Her most popular series, Yasmin, has twenty titles and follows the life of a spunky second-grade Pakistani American girl named Yasmin as she creatively works through everyday problems. A Kirkus Starred Review states, "Readers will be charmed by this one-of-a-kind character... Utterly satisfying." Ms. Faruqi will visit 1st and 2nd grade students at North Creek Elementary School. Beth Vrabel is the

author of more than a dozen books for middle grade readers, including The Newspaper Club, A Blind Guide to Stinkville, and To Tell You the Truth. Beth's realistic fiction focuses on friendships, family, and kids who learn to stand tall and solve problems in their everyday lives. Ms. Vrabel will visit South Meadows Elementary School to present to 3rd, 4th, and 5th grade students. Kari Anne (K.A.) Holt is the award-winning author of several middle grade novels-in-verse. Dedicated to showing kids that anyone can be the main character of a book, she writes a variety of books in and about poetry. Ms. Holt will visit 6th grade students at Beach Middle School. In an interactive presentation Holt will explore where ideas

come from, what makes a good story, and how to write interesting characters. Authors in Chelsea is about more than school visits! In addition to their time in the classrooms, this year's authors will be featured at An Evening with the Authors, which is open to the public and free of charge. The event will take place on Tuesday, March 19, at 6:30pm in the Washington Street Education Center Board Room located at 500 Washington Street, Chelsea, MI. Don't miss this exclusive opportunity to hear each author share their journey into the world of writing, participate in Q&A sessions, and get your books personally signed by the authors. Families, homeschoolers, lovers of youth and teen literature, and even aspiring children's au-

thors are encouraged to attend. The first 20 families to arrive will receive a coupon for a free book! Books will also be available for purchase courtesy of local Chelsea bookstore, Serendipity Books. Authors in Chelsea is possible thanks to the Chelsea District Library, the Chelsea School District, the Chelsea Education

Foundation, Serendipity Books, and the Friends of the Chelsea District Library. Special thanks goes to South Meadows Principal Stacie Battaglia for her years of support of this event. About Us: Chelsea District Library (CDL) is a not-for-profit organization whose mission is to engage, inspire, and equip through evolving services and resources. CDL currently serves 16,126 residents in the Chelsea library district—City of Chelsea, Lyndon and Sylvan Townships, and the portions of Lima and Dexter Townships within the Chelsea School District. For more information visit chelseadistrictlibrary.org.



Harmony, balance and walking your dog

By Michael Patterson.
LMSW
I have a border collie named Lucky. He insists on getting my full attention. He will whine, push his head under my hand as I lay on the couch, smile at me or use puppy dog eyes to elicit sympathy. Oh, he gets a lot of attention. But I guess if you were to ask him he would surely say "it's not enough." To be honest he really does not ask for much. Good dog food and occasional human food. A soft bed or couch to lay on. Lots of hugs and petting. And he loves to go out on adventures. How does he pay for this? Well, He does let us know when someone is at the front door. He listens. He gives unconditional love. He models how to be calm and be in harmony with his world. It is so easy for him. As long

as a family member is with him, he is happy. A friend of mine had a health scare about a year ago. He has taken up hiking in the woods with an almost obsessive passion. He had to retire from his business due to his health condition. At first, this was very difficult for him as he felt a loss of purpose in life. Hiking the trails around his home has brought back a sense of accomplishment and vitality to his life. Not to mention it helped him to drop 70 plus pounds. About two months ago he was down in South Carolina. He just took off by himself to try a section to the Appellation Trail. He texted me a picture when he reached the top of a small mountain. I called him when I received the picture. I heard in his voice something that I had

lost. Pure joy and reverence for the beauty that surrounds us if we just go looking for it. Later on, he talked me into training to hike a five-day section of the Appellation trail in late summer or early fall. So we meet about once per week to hike together (he kicks my butt right now). On other days I go out alone on the trails that surround my home or are close by. I am blessed in living near two state recreation areas that have a good trail system. Some days, when I can have Lucky off his leash, I take him with me. As with any exercise regimen, the first fifteen to twenty minutes are the most difficult. My mind goes through this ritual of identifying every ache and pain, questioning why I am doing this at my age. And how comfortable cozy my

couch is. Once I finish this mind ritual I get into the rhythm of the trail and the harmony of the forest. I have noticed that Lucky does not suffer from the agonies of the mind. He goes right into harmony mode. He will smell every smell, see every tree, hear every bird or squirrel, and of course let all the other animals know he has been there by marking his passing. How does one bladder hold so much pee is beyond me? Many years ago I saw a book titled Chop Wood, Carry Water. I never read the book but I always remember that title. For me, it tells how to find joy in simple activities. I found this to be true when I scrape paint off of wood. Most find this work tedious. I found it calming. I loved to be outside up on a ladder leaning against the

side of my century-old house, scraping the multiple layers of paint off of the old wood. With music playing or just the rustle of leaves dancing to the rhythm of the breeze, the sun peeking through the shadows onto the surface of the wood. I found peace. I found simple joy. Making an effort to do the simple things in

life can bring a sense of harmony and peace when you are feeling overwhelmed or just plain stressed out. It is easy to make excuses to not go outside, meet up with close friends, scrape and paint wood, or go for a walk with your dog. But then you miss out on simple joy, harmony, and the balance of a life well lived.

Chelsea Guardian

CLASSIFIED

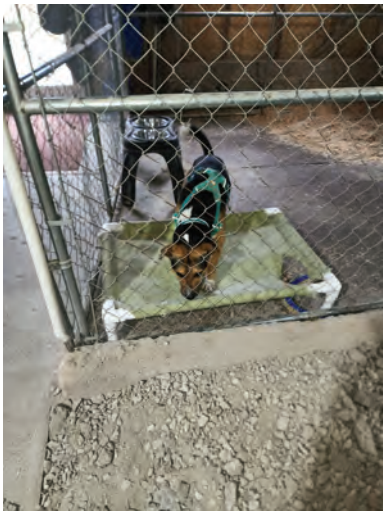
OFFICE MANAGER

Adult Learners Institute (ALI Michigan) has an immediate opening for a contractor to serve as office manager. Duties involve coordinating with ALI's Board to track income, expenses and class attendance, working with instructors, class assistants and techs to insure a pleasant lifelong learning experience for our students. In addition, you will monitor and respond to email correspondence, prepare and distribute agendas and other information for the monthly Board meetings, and attend and take notes at those meetings. The ideal candidate will have strong database skills in order to understand and use the specialized software that ALI uses to register and track classes. Highly flexible hours, with remote access possible for much of the work.

Offering 10-12 hours per week at \$20 per hour.

Send resume to Adult Learners Institute, P.O. Box 134, Chelsea, MI 48118 or to info@alimichigan.org. For more information, call 734-292-5540 and leave a message.

Mikey and Me, Local Dog Foster Celebrates 300 Adopted Dogs



► continued from page 1
a forever home.

In 1994 Daniel purchased a dairy farm on Freer Rd. He had a lot of land and a vacant crumbling dairy barn. He wanted to foster dogs about to lose their chance in shelters. The seed of an idea grew like crazy from there. His friends encouraged him to set up a Facebook page. Rather than simply ask the community for funding, he funded the remodel of the lower level of the empty dairy barn through donations of goods from the local community. He picked up items people were willing to part with. He organized and priced the items and held two enormous barn sales, each one taking about six months of work.

Using that money Daniel was able to close up the lower level of the barn to keep the elements out and spray insulation to keep the dogs safe and warm. Someone donated a fairly new furnace and the barn is now as cozy as a home. Daniel's love for dogs shines through in the interview. He did not want to cram dogs in small kennels like the kind they probably endured at rescues. He brought in seven spacious kennels, each the size of a small room.

He took me back from the front room, rebuilt by a twelve-year-old working on his Eagle Scout Badge. I was given a tour and the opportunity to meet the fosters. I warned him that my love for dogs

may make me want to adopt, but that I have two at home and am not in the position. He gave me a knowing smile. He'd heard this story before from his volunteer dog walkers, of which, had adopted about 9 dogs. Daniel is currently set on volunteers and has enough so that these little fosters get about 4 walks per day and some play, and snuggle time. He even has a heated play, and snuggle area inside the barn so that when Michigan weather is too unpleasant for walks the dogs are afforded snuggles and a place to get the zoomies out. These dogs also have an outside playground and walking paths through the vast property. Daniel has created the perfect foster spot for

dogs who have been lost from their families or up until this point, have had unfortunate lives. He's giving the sweet little pure-hearted babies a wonderful bit of hope.

Daniel teamed up with Happy Days Dog and Cat Rescue. The dogs come fully vetted and Daniel is careful to select dogs that are safe for his volunteers and for the public. The dogs are fixed and receive shots before adoption. Adoption fees go straight to Happy Days to cover the cost of vet care for the animals. Local pet stores donate bags of kibble which keeps costs down for Daniel. If you can't adopt at the moment, Daniel welcomes donations of canned dog food, which can be stored.

He also accepts donations of long-lasting treats, no raw-hide but other options such as No-Hide chews. Raw-hide can be a choking hazard for dogs and dogs need to be watched with rawhide, at all times, which is simply not feasible. Mikey and Me has hit the 300 dogs adopted milestone, including

the nine they nursed to health from heartworm. The average dog at Mikey and Me is 2-3 years old. Daniel is temperament but not breed-selective. As the owner of two bully breeds, who are two of the gentlest, nicest dogs, I've ever owned, this makes sense. Mikey and Me finds homes for 36-40 dogs per year and creates a happy place to stay for those in need of a home. If you're looking to adopt, check out Mikey and Me's Facebook page. It's a rotating slideshow of adorable sweet dogs looking to help you make your house a home.



¾" PREFINISHED SOLID HARDWOOD FLOORING

GOT A FLOORING PROJECT ON A BUDGET?

Discontinued / Odd Lots
\$3.49-5.29/sf
LOT SIZES 230SF – 1800SF

Small Seconds Lots
\$1.35 - \$2.49/sf
AVERAGE LOT SIZE 130SF

Have any DIY projects in mind?
Ask about our Miscellaneous Kiln Dried Lumber!

**7/8, 4/4, 5/4 WALNUT, CHERRY, BIRCH,
HARD MAPLE, WHITE OAK**

740 West Industrial Dr, Chelsea, Michigan 48118
Phone 734-433-1023 Showroom Hours 8am-5pm M-F
www.chelseaplank.com

*Community welcome!

March Events

Strengthening Your Posture* (CHE)

Tuesday, February 27–April 2 • 12:00pm–1:00pm

Members \$84, Non-Members \$90

These 6-week sessions will focus on strengthening your back, shoulder, and core muscles, which are all essential to standing with proper posture and preventing lower back pain. For more information or to register contact the Member Service Desk at 734-214-0220.

Yoga for Parkinson's Disease* (CHE)

Thursday, March 7–28 • 2:00pm–3:00pm

Member \$84, Non-Member \$90

People with Parkinson's Disease have been shown to respond favorably to the practice of Yoga. This class is suitable for people with PD as well as their caregivers. For more information or to register contact the Member Service Desk at 734-214-0220.

St. Patrick's Day Indoor Triathlon (DEX)

Sunday, March 17

This fun, festive event is your chance to test your mettle in a 10-minute swim, 15-minute bike, and 15-minute run, all under one roof. For more information or to register contact the Member Service Desk at 734-580-2500.

Strengthen Your Core* (CHE)

February 27–April 2 • 1:00pm–2:00pm

Member \$84, Non-Member \$90

Participants will learn how to break down their movement to engage their muscles and then advance their core as they progress. For more information or to register contact the Member Service Desk at 734-214-0220.

Training Your Pelvic Floor* (DEX)

February 29–April 4 • 5:00pm–6:00pm

Member \$84, Non-Member \$90

This class improves the strength and mobility of the pelvic floor, effectively enhancing the function of multiple systems. Members learn to contract and relax pelvic floor muscles in relation to other muscles. For more information or to register contact the Member Service Desk at 734-580-2500.

Member Family Swim & Gym* (CHE/DEX)

CHE—March 3 (Register by March 1)

DEX—March 24 (Register by March 22)

COST: Parent member and KIM child FREE. Non-KIM child \$8, Additional parent \$10.

AGES: 6 months to 11 years. For more information or to register contact the Member Service Desk at 734-214-0220 (CHE) or 734-580-2500 (DEX).

National Nutrition Month® Food Drive* (CHE/DEX/STK)

March 1-15

Help support local food bank programs. We'll deliver the food items we collect at the Wellness Centers to the local food banks to help those in need in our community.

Gen Z Group Fitness Classes (CHE/DEX)

Elevate your workout experience and join a community that understands your unique needs. Our dynamic classes are designed to energize, motivate, and empower our Gen Z generation. Get ready to break a sweat, make friends, and embrace a healthier, happier you. Don't miss out! Check out the class schedules for the Gen Z classes!

Youth Spring Break Pass* (CHE/DEX)

March 24–31 • \$20/week

Chelsea and Dexter Wellness Centers are offering youth passes for member's children. Keep your kids active at the Wellness Center by enjoying all the amenities the Center has to offer. Ages: 12-17. For more information, visit the Member Service Desk or call 734-214-0220 (CHE) or 734-580-2500 (DEX).

Adult & Pediatric CPR & First Aid Training Course* (DEX)

March 25 • 4:00pm–8:00pm

Member \$35, Non-Member \$45

Join us in becoming a certified lifesaver! Gain the skills to respond confidently in emergencies. Participants will learn how to recognize and care for sudden illnesses, cardiac, and respiratory emergencies in adults, children, and infants. For more information or to register contact the Member Service Desk at 734-580-2500. This is a skill set class. If you would like to receive a CPR & First Aid Certificate it is an additional \$36.



01E-21737984_0024

House Concerts Bring Music to Grass Lake



► continued from page 1
By Aimee Bingham
anbingham@gmail.com

Saturday, March 9 2024 Sam Robbins Performed in Grass Lake. The event was listed as House Concert Featuring Sam Robbins on Facebook. The event's host, Katie Geddes, formerly ran the Greenwood Coffee House series inside the First United Methodist Church, Greenwood Campus. Katie was in the process of building a Pole Barn on her 20-acre Grass Lake property. She'd already hosted a house concert in her living room but found the process challenging, as it required moving furniture and a lot of prep and clean up. House concerts are a popular event in Michigan and are defined as "A house concert or home concert is a musical concert or performance art that is presented in someone's home or apartment, or a nearby small private space such as a barn, apartment rec room, lawn, or backyard," by Wikipedia. So when the First United Methodist Church decided to stop sponsoring the Greenwood Coffee

House series, Katie adjusted the plans for the Pole Barn. As a musician, it was meant to be a rehearsal space but her love of the series and her knowledge of the Folk Music community made it a less strenuous space to host a smaller offshoot of the original. It's an intimate house-style concert featuring acoustic, folk music. The concerts are free with suggested donations to pay the artist at the door. Speaking with Katie, her passion is clear. She retired from her career and she's chosen to dedicate her retirement to the folk music community. Community is what she's building. Her history of running the Green Wood Coffee House series for the past 25 years has allowed her to become enmeshed with the folk community, locally and nationally. She assures me the Folk community, is a community and so too are her 4 volunteers and her sound guy. She hopes the events will provide a comfortable spot for local folk music lovers to attend, meet new friends, and be in an

alcohol free safe environment. Often, people are uncomfortable attending movies or dinner alone. But, Katie believes the entertainment and warm welcoming environment is the perfect way to enjoy music and make friends. She's excited to bring something different to the Grass Lake community. Katie also hopes to extend her welcome to Grass Lake's neighbors in Chelsea. Though Chelsea does offer more cultural opportunities, Katie is unaware of any folk music space. If you'd like to know the dates of House Concerts they are listed on The Greenwood Coffee House Series page <https://greenwoodcoffeehouse.org/>. Be certain to check the location. House concerts are an offshoot and are listed with the original series. Katie's location space is called Out of Eden, but you're welcome to attend either. The original space is called the Sanctuary. Upcoming events in Grass Lake are April 5, April 7, and May 4. May 4th will be the last house Concert of

the season. Katie believes the beauty of Michigan's summer deter's people from spending a beautiful night indoors at a concert. House Con-

certs at Out of Eden will return in September. Be sure to attend a new experience locally and it is a family-friendly event, so feel free to bring your

kids. Non-alcoholic drinks and snacks are available. A \$15 donation for the artist is encouraged at the door.



Tickets on sale now for CAP Jr.'s production of Aladdin JR



CAP Jr., the youth theater company of the Chelsea Area Players will present Aladdin at the George Prinzing Auditorium, WSEC 500 Washington Street, March 15-16 at 7 p.m. and on March 17 at 2 p.m. Grab your magic carpet and take a journey to the city of Agra-

bah in Disney's Aladdin JR, adapted from Disney's hit Broadway production and the animated film. Aladdin and his three friends, Babkak, Omar, and Kassim, are down on their luck until Aladdin discovers a magic lamp and a Genie who has the power to grant three wishes.

Wanting to earn the heart of the princess Jasmine, Aladdin sets off on a thrilling adventure that tests his will and moral character. Director Alex Moore notes, "We have an amazing cast of 63 actors in this show -- one of the biggest we've had ever for a musical, and certainly the biggest since the pandemic! The kids love performing the parts and roles that they remember seeing in the movie. The difficulty comes in trying to make our lim-

ited community theater resources match the expectations people have, especially with the iconic components of a show." She teases, "We are very excited about what our tech team is planning. I think the audience will really enjoy the way Aladdin and Jasmine "fly" on stage." With some of the most beloved Disney characters and songs like "Arabian Nights" and "Friend Like Me," this show is sure to

open up a "whole new world" for audiences! General admission tickets are available for \$10 online at www.chelseaareaplayers.org, at Chelsea Pharmacy, 1125 South Main St., or at the door. **About Chelsea Area Players:** Formed in 1972, the purpose of the Chelsea Area Players is to enrich the educational and cultural life of the community, promote understanding and appreciation of an important art, provide

worthwhile entertainment, encourage interest and active participation by the community in all phases of the theatre through dramatic productions and other related activities, and to foster and support the involvement of adolescents and young adults of the community in the dramatic arts. To learn more, visit our website at www.chelseaareaplayers.org or follow us on Facebook www.facebook.com/chelseaareaplayers

Adult Learners Institute Announces its March Lineup



In addition to St. Patrick's Day and the first day of Spring, the month of March also provides the following intellectual stimulation, courtesy of ALI.

Walking in Our Grandfathers' Footsteps is the name of Wendy Zielen's class on March 4 when she shares stories of the men who served in one of history's most tragic catastrophes, World War I, the Great War. The stories of their courage, heroism and pain are revealed in historical records and artifacts, as well as in their personal memories.

Hank Muir asks that one refrain from dancing to the melodies of the first half of the twentieth century in his American Musical Theater classes on March 6 and 13. However, he does allow toe tapping to music from Tin Pan Alley through Bing Crosby, Judy Garland, Nat King Cole, Rock n' Roll, and even some singers we have never heard of.

Ann Beyer's March 8 class, What's Up? Wolf Ethology introduces ethology, the science of behavior, and she suggests that the behavior of wolves may explain some traits of human behavior. She has made several trips to the International Wolf Center in Ely, Minnesota, where she has learned much the relationship of these animals not only to their own habitat, but also to what they can tell us about ourselves.

We have all experienced that unexpected "hunch" that alerts us that something dangerous or harmful or possibly quite wonderful is coming at us. But when the moment passes, we tend to dismiss its significance. Beverly Fish thinks we should take that "hunch" seriously, and in her classes on March 11 and 18, Developing Your Psychic Ability and Spiritual Self, she will discuss ways in which we can enhance our intuitive abilities, not just occasionally but in our everyday lives.

Susan Nenadic's classes on March 20, April 3 and 10, Aging: Three Films Finding Joy in New Relationships, upend the notion that aging is simply a matter of rocking

chairs and pills. The three films focus on an English woman who moves to a boarding house in London, a French lady who befriends a man considered "not too bright", and an 84-year old former Mau Mau warrior from Kenya who wants to learn how to read.

Unless you are unconscious, you may find it difficult to avoid becoming at least a little distraught occasionally. Reverend Dr. Price cannot promise to remove the sources of our anxiety but his March 22 class, Decision Making and Anxiety will show how to hit the reset button when "S**t happens. He advises students to bring along their questions as well as their sense of humor.

Trisha Terns' trained ear for language has allowed her to figure out how to harness thought and language to work more effectively to enhance our health, wealth and relationships. Her March 27 class, Mindfulness and the Art of Internal Language is an engaging dive into the principles of neuro-linguistics, a tool that you probably never knew existed but one that can enhance memory and provide

strategies for effective communication

Is an Electric Vehicle in Your Future? is the question explored by John Daly in this class on March 25. Most of us have to admit that we really don't know much about them. While most EV owners charge their vehicles at home, they also need public chargers. However, not all

EVs can use every public charger, and various charger types recharge EVs at different speeds. This class simplifies matters and helps you decide if, indeed, an EV is in your future.

Catalogs containing more information on these and ALI's other Winter/Spring classes, as well as the registration form are available at grocery

stores, libraries, senior centers and several churches and businesses throughout the Five Health Towns area as well as at www.alimichigan.org.

You will find that the elimination of ALI's administration fee and the renovation of the web site have made registration for ALI's classes much simpler.

2024 CALENDAR OF EVENTS



Business Breakfasts
Jan 11th | 7-9am
April 11th | 7-9am
July 11th | 7-9am
Oct 10th | 7-9am

Wellness After Hours
Jan 17th | 5-6:30pm

Chocolate Extravaganza
Feb 10th

Curling Fest
Feb 24th | 8-11pm

Annual Meeting
March 6th | 6-8pm

Sounds & Sights on Thursday Nights
June 6th-July 25th & Oct 24th
6:30-8:30pm

Sounds & Sights Festival
July 26th-27th

Community Picnic
Aug 10 | Noon to 2pm

Golf Outing
Sept 4th | 7:30am-3pm

Backyard Beer Garden
Oct 12th | 3-10pm

Hometown Halloween
October | All Month

Wine, Women, & Shopping
Nov 8th & 9th

Hometown Holiday
December | All Month

Sculpture Walk
All Year

Chelsea Trail Challenge
Feb 1st-Nov 30th

Scan the QR Code or visit chelseamich.com/calendar/ to view a full calendar of events.



Spring Into Your Next Project!



Fund your project with a:

- Rewards Credit Card
- Personal Loan
- Home Equity Loan
- Home Equity Line of Credit

Apply today to be entered to win one of ten \$500 gift cards!*

Apply today!*

Boldly Generous. Convenient. Uncomplicated.

Chelsea Branch *Inside Polly's Country Market*
1255 South Main St. | (734) 475-3416

*Visit american1cu.org for full details!
Federally Insured by NCUA | Equal Housing Opportunity

Amer1can
CREDIT UNION

US-12 Chelsea Branch Now Open!
12855 Old US-12 E - Suite 7

american1cu.org | (888) 213-2848

Chelsea High School: Annual Collage Concert Exemplifies Collaboration



Photo credit goes to Chris Hilgendorf

Chelsea Music Boosters
<https://chelseamusicboosters.org/>
740 North Freer Road
Chelsea, MI 48118
Contact:
Angela Menegay
menegay@yahoo.com
Prepared by:
Crystal Hayduk
cahayduk@gmail.com
734-834-6764

Student musicians performing at the annual Chelsea High School Collage Concert will fill the Ron Mead Auditorium with beautiful music on April 6.

The concert’s program will include an eclectic array of musical styles performed in a continuous display, from one piece to another, unbroken by applause or the spoken

word for the length of the 90-minute program.

The music department’s wind symphony, concert band, symphony orchestra, concert orchestra, Bella Voce Choir, and chamber choir will perform throughout the auditorium. The high school’s extracurricular music groups, Chelsea House Orchestra and the jazz band, are also on the program. Company C, the historically popular show choir, is expected to return to the stage under the direction of the district’s new choir director, Kenneth Davis. (The last time Company C performed was Feb. 29, 2020, just before

the COVID-19 shutdown.)

In addition to the large groups, a number of small ensembles who receive the highest marks at State Solo & Ensemble in March will also share their exceptional pieces.

All music students will gather on stage for the grand finale, “You’ll Never Walk Alone” (from the 1945 musical “Carousel”) with “Climb Ev’ry Mountain” (from the 1959 musical “The Sound of Music”), both composed by Richard Rodgers.

This will be the first Collage Concert in the high school’s newly renovated auditorium. Rachel Slupe, the high school’s au-



ditorium manager, said assistive hearing devices are part of the facility updates. “These are wireless packs with headsets programmed to pick up the microphones and provide enhanced sound for their user,” she said. To borrow one of these headsets, patrons need to notify the organizer in advance with a ticket purchase. Upon arrival, the patron will check out the headset with their ID. Following the performance, the patron should return the headset to the same house team member, who will return the ID.

“The Collage Concert shows the strong value Chelsea School District and the community have placed on the arts and K-12 music education,” said Nathan Peters, orchestra director at Beach Middle School.

Angela Menegay, president of Chelsea

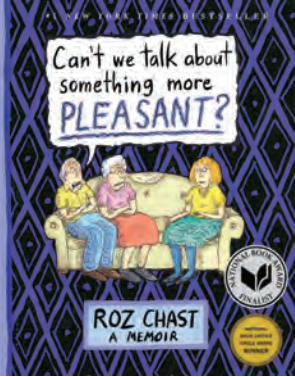
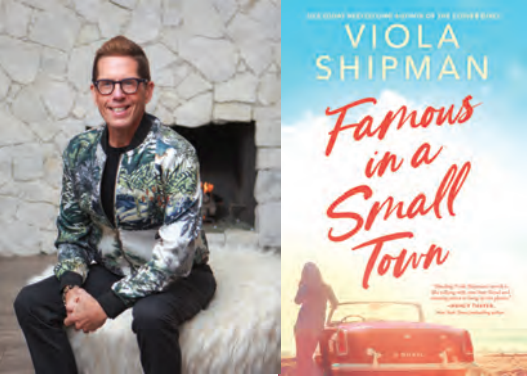
Music Boosters (CMB) and parent of three high school symphony orchestra students, said the “... immersion in an evening of musical talent ... has been one of the most popular music events ...” in the district since the inaugural concert in 2014. Because it is a CMB fundraiser, attendance helps support the district’s music education program.

At a glance: The 2024 Collage Concert will be held at 7 p.m. on April 6 at the Ron Mead Auditorium, Chelsea High School, 740 North Freer Rd. Reserved seating tickets are \$15 for adults and \$10 for students/seniors. Tickets can be purchased in advance online through the GoFan app or the GoFan website at <https://gofan.co/> by searching “Chelsea Bulldogs Music.” Ticketing is also linked on the CMB website at <https://chelseamusicboosters.org/>.

chelseamusicboosters.org/. Tickets will be available at the door with cash, check, or credit card beginning at 6:30 p.m. Important note: To request an assisted hearing headset for this event, email info@chelseamusicboosters.org in advance.

About Chelsea Music Boosters: The Chelsea Music Boosters is a 501(c)(3) non-profit organization that advocates for and fundraises to help support and enhance music education programs in the Chelsea School District for Young 5s through 12th grade. Financial support provides program essentials and enhancements including music literature, instrument repairs, solo and ensemble coaching, music clinicians, and field trips. For more information, visit <https://chelseamusicboosters.org/>.

Nationally recognized, award-winning authors are coming to Chelsea!



AUTHOR: Laura Brown, ADult Services Librarian
CONTACT: Virginia Krueger, Head of Marketing
PHONE: 734-475-8732 x229
E-MAIL: vkruieger@chelseadistrictlibrary.org

Chelsea District Library (CDL) is thrilled to announce the 16th Annual Midwest Literary Walk lineup featuring Memoirist & New Yorker Cartoonist Roz Chast, American Book Award Author and Poet Chitra Banerjee Divakaruni, and 2023 Michigan

Notable Book Award Author Wade Rouse (Viola Shipman). Each year, Chelsea’s amazing literary event showcases award-winning authors from around the country at historic venues throughout downtown Chelsea. The Walk will take place from 1–5pm on Saturday, April 20. It includes author talks, book signings, and is free and open to the public.

At 1pm New York Times bestselling author Roz Chast opens the Walk at Main Street Church, 320 N. Main

St., Chelsea. Chast is perhaps most well known for her work for The New Yorker, including covers and cartoons published consistently from 1978 to today. She is also the author of more than a dozen books, including Can’t We Talk about Something More Pleasant? and her latest, I Must Be Dreaming. Chast is a National Books Critic Circle Award winner, a National Book Award finalist, and a recipient of a Reuben Award and a Heinz Award among many others.

Dr. Chitra Banerjee Divakaruni continues the Walk at 2:30pm. at First Congregational Church of Chelsea, 121 E. Middle St., Chelsea. Divakaruni is the author of more than 20 books, including Mistress of Spices, Oleander Girl, Before We

Visit the Goddess, The Last Queen, and her most recent novel, Independence. With her novels and her poetry, Divakaruni captures contemporary life in America and India as well as history, and mythology. She has received an American Book Award, a PEN Josephine Miles award, a Premio Scanno (also known as the Italian Nobel) award, a Light of India award, and an Allen Ginsberg poetry among many others. Two of her novels, The Mistress of Spices and Ammar Maa, have been made into films.

The Walk concludes at 4pm at Chelsea First United Methodist Church, 128 Park St., Chelsea, with Wade Rouse, internationally bestselling author of fiction and memoir. Rouse writes under both his given

name, and under Viola Shipman, a pen name inspired by his grandmother and meant to honor poor Ozarks seamstress whose sacrifices changed his family’s life and inspire his fiction. Rouse’s books have been NBC’s Today Show Must-Reads, Michigan Notable Books of the Year, featured in the Washington Post and USA Today, chosen three times as Indie Next Picks by the nation’s independent booksellers, and selected as part of the American Library Association’s inaugural “Rainbow List.”

Books will be available for purchase at each location courtesy of Serendipity Books and time will be reserved for book signings following each author session. For more information about this year’s Midwest Literary

Walk visit midwestliterarywalk.org.

This year’s event is sponsored by the Friends of Chelsea District Library and in partnership with Chelsea Chamber of Commerce and Serendipity Books.

About Us: Chelsea District Library (CDL) is a not-for-profit organization whose mission is to engage, inspire, and equip through evolving services and resources. CDL currently serves 16,126 residents in the Chelsea library district—City of Chelsea, Lyndon and Sylvan Townships, and the portions of Lima and Dexter Townships within the Chelsea School District. For more information visit chelseadistrictlibrary.org.

Chelsea Outfitters Has Moved



► continued from page 1
By Aimee Bingham
anbingham@gmail.com

Chelsea Outfitters opened in Chelsea nearly a year ago. Situated in a small shop on Main St. just above Geek Brush studio, I stopped in last year with a freshly mended arm from a ski crash. I met Megan Trenary, who owns the shop with her husband. She was warm, outgoing and kind. She even offered advice on my arm explaining that she was educated in nursing. I loved everything about the store, the products, and especially the kind generous woman behind the name.

This week, I saw someone post on Facebook that the newly expanded shop opened

across the street in the old Kempf Commercial and Savings Bank. The person posting mentioned that much of the building's former character was intact. On track with the person I met nearly a year ago. So I made it a point to visit on Saturday. Mack, the owner's son was behind the counter as his mother scurried around the store. Saturday was the second day open, so Megan was organizing and greeting customers.

Upon entering the store, I noticed the tile floors. They are gorgeous and according to Megan were hidden beneath carpet and tile. The old beauty was revealed with a lot of hard work by both her and her husband Matt who

handles web design and operations of Chelsea Outfitters. Based on the art of the old tile, well worth it. They not only preserved a part of Chelsea's history but put it on display. Kempf merged with Farmers Merchants during the Great Depression and became what is now known as Chelsea State Bank. The old tile has some imperfections that come with age but the craftsmanship is magnificent. I also noted how nice the store smelled, and incidentally so did everyone else who walked in after I did. I turned to search for the cause of the smell and noticed a display of Castille soap and what I assume was Earth, human-friendly laundry soap. Because

I don't trust the chemicals found in soaps, I make my own body wash and laundry detergent, I assumed it was the bottles giving off the nice smell. I add fragrance through essential oils, so that's what I concluded. Megan later explained that she has a diffuser as I made my purchase.

The last time I visited with Megan, she had a small cramped sewing area with the hope that people might utilize it rather than toss clothing away. The North-East Recycling Council states: The next time you toss a shirt into the trash because it's time for a fresh one, consider this: the manufacture of clothes, shoes,

belts, and accessories – otherwise known as textiles – is the second largest polluting industry in the world after oil and gas. That's right. Pesticides used to grow cotton, toxics in dyes, and energy-intensive manufacturing create a whopping impact on the environment and public health.

The sewing area has grown, and Megan apologetically explained that it's not yet organized. No worries, most people have unorganized crafting areas too. But, if you want to patch jeans or repair garments, Chelsea Outfitters is happy to support your efforts. There are several craft projects in the corner if you're

interested in learning. She also offers healthier face paint options and Easter egg options.

On the other side of the store, I noticed a tent, which was a cool outdoorsy-themed changing room near the flannels and the Osprey backpacks. The newer shop seems to feature more options to encourage getting outside and enjoying the nature that many items in the shop are made with the hopes of preserving. As I walked around, I found a bee's wrap reusable food storage bag, which is great for anyone making their own sourdough bread as plastic encourages mold growth and is an endocrine disruptor. I did not look at price, but selected and purchased, as I like giving business to local community members. Much to my surprise, it was less expensive than Amazon! Quality products, great decor, prices and staff; Chelsea Outfitters is a wonderful newer addition to the community.



Chelsea Senior Center Giving Caregivers a Much-Needed Respite



The caregiver role is essential for the well-being and comfort of loved ones in need of extra support. Caring for loved ones requiring all-day companionship can be exhausting. The good news is that there is a program offered by Chelsea Senior Center that focuses on easing the day for caregivers. The program is now offering an additional day in the week for respite.

Launched in April 2023, Chelsea Senior Center's active Ease the Day: Caregiver Respite Support Program is a valuable community resource. Caregivers whose loved ones, called friends, meet the day-care requirements and screening process drop off their loved ones at Chelsea Senior Center. This gives caregivers time for their own self-care, appointments, or participation in an activity at the center.

Dedicated and enthusiastic employees and volunteers interact with Ease the Day friends in positive, fun, engaging ways. The structured program includes time for exercise, brain games, creative endeavors, and peer socialization. This change in environment is great for both caregiver and Ease the Day friend.

Ease the Day is expanding respite care hours to include Wednesday mornings

from 9:30 a.m. to 12:00 p.m. This is in addition to the Tuesday and Thursday hours of 9:30 a.m. to 2:00 p.m. This new offering is for families in need of services who are not currently participating on Tuesday and Thursday.

Specifically, the new Wednesday offering is for those caregivers and loved ones who aren't quite ready to be separated for several hours, or who don't meet the requirements for an extended stay. The Wednesday hours give caregivers the opportunity to participate in one of Chelsea Senior Center's Wednesday morning activities, such as pickleball, stained glass art, or enhance fitness. In development is a new daytime Caregiver Support Group that will meet on Wednesdays during this time.

"Caregivers can tend to their personal needs, while their loved ones develop friendships, pursue interests, and learn new things. Overwhelmingly, volunteers, caregivers and our Ease the Day friends look forward to participating each week," says Katie Garvey, OTRL, CAPS, who programs the daily activities with Lisa Klinkman, RN, MSN.

Beyond caregiver respite at Chelsea Senior Center, in partnership with Catholic Social Services, volunteers are needed to provide short-term companion-

ship – two to four hours a week – in homes in Western Washtenaw County. To learn more about the joy of volunteering to provide in-home caregiver respite, please attend the March 13 Open House hosted by Catholic Social Services and Chelsea Senior Center at 525 Washington Street in Chelsea. Stop by between 12:30 and 2:30 p.m., ask questions, get inspired and learn how you can volunteer.

Ease the Day: Caregiver Support Respite Program is funded by Exhale, the Family Caregiver Initiative, the Ralph C. Wilson, Jr. Foundation, Health Foundation for Western & Central New York, Ann Arbor Area Community Foundation, and managed by The Philanthropic Initiative (TPI).

For questions, please contact Katie Garvey or Lisa Klinkman at Chelsea Senior Center at (734) 475-9242 or caregiversupport@chelseaseniors.org.

Chelsea Senior Center (CSC) is a 501c3 nonprofit organization celebrating 60 years in Chelsea, Michigan. Its mission is to enhance the quality of life and well-being for area seniors and their families. Chelsea Senior Center is located at 512 Washington Street. Contact CSC at connected@chelseaseniors.org or (734) 475-9242.

New Home Community Heritage Farms Opening in Chelsea This Spring

First phase of development brings 48 new homesites to Washtenaw County

M/I Homes Detroit, one of the nation's leading homebuilders, will open the first phase of Heritage Farms, a new community located in Chelsea, just off Dexter-Chelsea Rd. this month. The new community is within walking distance of Downtown Chelsea, features wide sidewalks, tree-lined streets, and is located within the Chelsea School District.

The community offers five, 2-story single-family floor plans ranging from 1,858 to 2,733 sq. ft. The floor plans include 3 to 5 bedrooms and two and a half to three bathrooms. Structural add-ons include three car garages and morning rooms. Average homesites are 60 feet by 120 feet, and each home is supported by M/I Homes' quality promise and industry-leading 10-Year transferable structural warranty.

Homebuyers have the option of purchas-

ing an available quick move-in home or building from the ground up on a specific homesite.

"Heritage Farms offers residents an A-rated school district, accessibility to the major roadways, and provides walkability to the area's amenities," said Sascha Vallat, vice president of sales and marketing for M/I Homes Detroit. "Chelsea is a charming place with countless reasons why people would choose to live there, and we are looking forward to providing new housing for generations to come."

Heritage Farms is less than one mile outside downtown Chelsea and its thriving community-centered atmosphere. A short drive down North Main St., homebuyers will find local restaurants and shops, year-round community events, parks, and live entertainment. It's conveniently located between Ann Arbor and Jackson.

Sales begin on March 13 and the public grand opening celebration is from 1 to 5 p.m., on Saturday, March 23. Guests will enjoy tours of the brand-new Peyton model home, refreshments, and the opportunity to speak with the new home consultants to learn more about the available floor plans and homesites.

Heritage Farms will be completed in six phases. The first phase includes 48 homesites, and 231 homesites in total.

Heritage Farms is one of three new communities the division will open by May 2024. In addition to Heritage Farms, Creekside Park in Macomb County and Cobblestone Creek Woodlands in Wayne County, will add nearly 400 new homesites to southeast Michigan in four years.

To schedule an appointment, or to learn more, visit MHHomes.com/HeritageFarms.



Gary Munce, co-founder of the Jam Session at CSC, leads the group in a song at a recent Wednesday afternoon session.

**Submitted by
Gretchen Zale**

Following in the footsteps of its highly successful first musical undertaking, the Ukulele Group, the Chelsea Senior Center now offers a variety of musical opportunities to its members and friends.

One of them, The Jam Session, was formed by Gary Munce and Kelly Schmidt. Starting with a core group of four or five hearty souls, they envisioned a way to bring more music into the lives of their friends at the Senior Center. Meeting at CSC on the first and third Wednesdays of each month at 12:30 pm, the group sees a growing number of

people looking for music in their lives, either by participating or by dropping in just to listen.

The musical group now has as many as 10 people who bring their favorite instruments, including violin, guitar, flute, ukelele, harmonica, percussion, mandolin and bass. All ages and levels of musical talent are invited. Many others make up the lively and appreciative audience

Munce says, “The Jam Session is a great way to enjoy life by

SENIOR MOMENT: Jam Session

connecting with others around music. We have the opportunity to experience a variety of music and learn from others in a relaxed and welcoming setting.”

A number of recent surveys and studies have shown that music participation, especially in older people, is the ultimate way to connect and collaborate. Music also enlivens the day and helps trigger memory recall in those living with dementia. A recent feature article

in AARP Magazine highlighted the growing body of evidence that music plays an important part in the well-being of seniors, and provides a critical therapeutic avenue for those with brain injury and dysfunction.

CSC member Jim Hughes, who plays guitar and ukelele, has played mandolin at the Chelsea Farmers’ Market and at the Chelsea Retirement Home. He believes that playing with a group like Jam Session is supportive, encour-

aging, and a life-enriching experience that can be started at any age.

CSC membership is open to all ages. So come along and bring your friends to a Jam Session and plan your time for joy!

The Senior Moment feature highlights opportunities for older adults through the Chelsea Senior Center and related organizations. Call the CSC at (734)475-9242.



It’s no work and all play for the (mostly) amateur musicians who come to play twice a month at the Jam Sessions. Newcomers are welcome.

IF YOU LIKE
THE NEW SUIT...
YOU’LL LOVE THE
NEW STORE



PLEASANTREES

Mount Clemens New Retail Space Opening In March

www.EnjoyPleasantrees.com



Chelsea Guardian

March 15, 2024

Page 10

The Purple Rose Theatre Company’s Spring Production is Devilishly Funny

A World Premiere comedy, by David MacGregor, “The Antichrist Cometh” opens in March

The Purple Rose Theatre Company (PRTC) announces the second production of their 33rd season, “The Antichrist Cometh” by beloved playwright, David MacGregor. Tickets are on sale now.

“The Antichrist Cometh” is a comedy about a happily married man who discovers that he might be the Antichrist. Will he be able to enjoy a small dinner party with his loving wife, former college roommate, and his roommate’s devoutly religious fiancée? Or will their home-cooked meal usher in the Apocalypse?

This production of “The Antichrist Cometh” contains adult content and may not be suitable for children under the age of 13.

“The Antichrist Cometh” playwright and PRTC Resident Artist, David MacGregor, to premiere his ninth play and tenth production at The Purple Rose. Previous plays include: “The Late Great Henry Boyle” (2006), “Vino Veritas” (2008), “Gravity” (2010), “Consider the Oyster” (2011), “Just Desserts” (2014), “Vino Veritas” (2017), “Sherlock Holmes and the Adventure of the Elusive Ear” (2018), “Sherlock Holmes and the Adventure of the Fallen Soufflé” (2019), and “Sherlock Holmes and the Adventure of the Ghost Machine” (2022). A Detroit native and Michigan State University graduate, David is an accomplished playwright, novelist and screenwriter. His work has been published by Dramatic Publishing, Playscripts, Smith

& Kraus, Applause, Heuer Publishing, and Theatrical Rights Worldwide (TRW). For more information about David, visit david-macgregor.com.

Performances of “The Antichrist Cometh” at The Purple Rose run from Friday, March 22 through Saturday, May 25, 2024. Previews, with reduced-price tickets, are available through Thursday, March 28. The press opening is Friday, March 29 at 8:00pm.

Directed by Rhannon Ragland, the cast features Ryan Carlson* (Grass Lake), Hope Shangle* (Dexter), Ryan Patrick Welsh* (Okemos), and Ashley Wickett* (Bloomfield Hills). Set Design by Sarah Pearline, Properties Design by Dana Segrest, Costume Design by Marley Boone, Lighting Design by Matt Taylor, Sound Design by Matthew Tibbs, with Intimacy Direction and Fight Choreography by Alexis Black. Bill Carlton* is the Stage Manager.

*The asterisk denotes members of the actor and stage manager union, Actors’ Equity Association.

Production Sponsors for “The Antichrist Cometh” are The Charles Craves Family and Rick Taylor Real Estate. Underwriting support for the season comes from Michigan Arts and Culture Council, National Endowment for the Arts, The Shubert Foundation, and The Matilda R. Wilson Fund. Media sponsors include JTV and Michigan Radio.

Ticket Information

All performances will be held at The

Purple Rose Theatre Company, 137 Park Street, Chelsea, Michigan 48118. The performance calendar can be found <https://www.purplerosetheatre.org/calendar/>.

Ticket prices start at \$30 with special discounts for seniors, patrons 30 years or younger, members of the military, teachers, and groups (12+). For more information or to make reservations call (734) 433-7673 or go to www.purplerosetheatre.org.

New to the 2023/2024 season, all PRTC productions will be staged in the round, with seating on 4 sides of the stage. This new configuration will add 40 seats to the theater space.

About The Purple Rose Theatre Company

Founded in 1991 by actor, director, playwright, musician, and Chelsea native Jeff Daniels, The Purple Rose Theatre Company is a creative home for original American plays. At the PRTC, patrons experience an intimate encounter with live theatre.

The Purple Rose also provides preview talk-backs, free play readings, and ticket donations to local fundraisers. It commissions new work from established and early-career playwrights. As a 501(c)(3) non-profit professional theatre, the PRTC operates under a Small Professional Theatre agreement with the Actors’ Equity Association.


For more information contact PRTC Managing Director, Katie Hubbard at (734) 433-7782 x 116, khubbard@purplerosetheatre.org.

THE
ANTICHRIST
COMETH

A WORLD PREMIERE BY
DAVID MACGREGOR

DIRECTED BY
RHIANNON RAGLAND



the
PurpleRose
theatre company

March 22 - May 25, 2024
PurpleRoseTheatre.org
734.433.7673



Chelsea Police Department Weekly Summary

Incident #: 24-771
Date: March 5, 2024
Location: 400 block of Chantilly Lane
Time: 8:57 pm

INFORMATION: While on routine patrol an officer was dispatched to the 1600 block of S. Main Street for the report of a counterfeit currency complaint. Upon arrival the officer met with the complainant who stated that earlier in the evening three subjects had come into the establishment and purchased multiple lottery tickets. The subjects paid for the lottery tickets with two \$20 bills. The complainant stated that when the subjects left the establishment, he became suspicious of the authenticity of the bills because “the bills felt wrong”. The complainant used a counterfeit testing pen which indicated that the bills were both counterfeits. The counterfeit bills were taken as evidence in the investigation and logged into property. The case was turned over to the investigator for further follow-up on the identity of the suspects.

Incident #: 24-770
Date: March 5, 2024
Location: 400 block of Chantilly Lane
Time: 5:18 pm

INFORMATION: A complainant came into the Chelsea Police Department to report that in January, she had discovered multiple unauthorized purchases that were made using her debit card. The complainant stated that the majority of the purchases appeared to have been made at multiple retail locations throughout the state of Maryland. The complaint was turned over to the investigator for further investigation.

WASHTENAW UNITED DIVISION 2 STATE FINALS

► continued from page 2

2-minute Regina minor, at the end of the 2nd and beginning of the 3rd. There was no scoring in the 3rd, until Regina pulled their goalie with time running down in the third. Schlack would pick the puck up at her own goalline and fire it down to the other end, finding its way into the open net to extend the lead to 4-1 with 48 seconds to go. With the Regina goalie still pulled, Washtenaw would score its fastest 2 goals in team history. At the center ice circle, Henriksen won the faceoff to her left to Chloe Dillen (Saline, ‘24). Dillen would give it back to Henriksen at the red line who would fire a backhand into the empty net from the red line less than 6 seconds after the 5th goal.

After the game, United Coach Adam Winters had this to say about the win: “This was a great team effort today, we had everyone going up and down the lineup. Just excellent execution of our game plan. We came into this game not feeling like the underdog. We lost to Regina 2-1 a few weeks ago, and really dominated play in the 2nd half of that game, we just couldn’t find a way to get the puck in. We tried to play Regina’s game and got caught taking penalties and were distracted from what we wanted to do. We used two matchups against some Division 1 teams after the Regina game to work on our team defense, finalize our lines heading into playoffs, and put together some really strong portions of games against tough opponents. We knew if we could do that for 3 periods, we’d have a positive result. The team focused on what we needed to do to win, dictate play, and it showed today. I can’t say enough about the execution and effort today from the entire team.”

Washtenaw will face Cranbrook on Saturday at 10am at USA Hockey Arena in Plymouth. 2-Seed Cranbrook defeated 3-seed Walled Lake 6-1 Wednesday. Tickets can be purchased through GoFan at the league website, 2024 State Playoffs (mignorishshockey.org).

The game will also be streamed live by Arbor Broadcasting here [Arbor Broadcasting](http://ArborBroadcasting.com) - Sports Broadcasts, Play by Play, and on the MGHSHL Facebook page.

INFORMATION-AL ADDENDUM: Washtenaw United is a High School Girls’ Hockey Team skating out of the Chelsea’s Arctic Coliseum. The team serves High Schools within Washtenaw County that do not have a dedicated team to play for. Currently, Pioneer and the combined Skyline-Huron have dedicated teams. Washtenaw United is made up of players from Saline, Dexter, Chelsea, Manchester, and Milan. The team is in its first year of play, and is an affiliate member of the Michigan Girls High School Hockey League (MGHSHL).

Email: WashtenawUnitedHSHockey@gmail.com
Facebook: [@WUHS-GirlsHockey](https://www.facebook.com/WUHS-GirlsHockey)
X (Twitter): [@WUHS-GirlsHockey](https://twitter.com/WUHS-GirlsHockey)
Instagram: [@WashtenawUnitedHockey](https://www.instagram.com/WashtenawUnitedHockey)