



Chelsea Guardian

is a proud member of the
Chelsea Area Chamber of Commerce

January 26, 2024

Volume 7 Issue 4

Chelsea Guardian

Phone: 734-636-3779

guardiannewspapersmi.com



facebook.com/ChelseaGuardian

Hamilton
Publishing



**2024
CALENDAR
OF EVENTS
SCHEDULE**
INSIDE ON PAGE 6

Kira Grifka Chelsea 2023 Citizen of the Year



Story on page 2. Photo Courtesy of Kira Grifka.

CHELSEA BULLDOGS WRESTLING TAKE 1ST PLACE AT 2024 COMSTOCK FRIDAY NIGHT INVITE!!



Story and another photo on page 4. Photos Courtesy of Chelsea Bulldogs.

new moon neuro
MICROCURRENT NEUROFEEDBACK

Lasting relief from anxiety,
depression, ADHD, OCD, TBI,
insomnia, addiction, PTSD,
migraines, pain issues and more.

drug free painless FDA approved
1307 S. MAIN STREET, SUITE B • CHELSEA, MI 48118
LOCATED DOWNTOWN CHELSEA
734.210.1922
NEWMOONNEURO.COM

HEYDLAUFF'S APPLIANCES HOSTING CHEF SERIES #5



Story and another photo on page 3.

**CURLING
FEST**

FEBRUARY 24TH 8:00-11:00 PM

- LEARN TO CURL SESSIONS
- ALL YOU CAN EAT PIZZA, SALAD & POP
- OPEN SKATE

ADVANCED
REGISTRATION
REQUIRED

PRESENTING SPONSOR:
**HALEY
MECHANICAL**

CHELSEAMICH.COM



2024 Events!

50/100 Centennial Series
Jan 8 ~ Merkel Furniture
with Tim and George Merkel
Mar 4 ~ Cole Funeral Chapel
with Allen Cole
May 6 ~ Chelsea Milling Company
with Howdy Holmes

Aug 5 ~ Chelsea State Bank
with John Mann
Sep 9 ~ Chelsea Lumber Company
with John Daniels
Oct 7 ~ Lane Animal Hospital
with Chan Lane
Nov 4 ~ CAHS 50th Anniversary
with CAHS Board

**2024 Tours &
Gatherings**
Spring & Summer ~ To be
Announced!

Fall ~ Haunted Chelsea
December 7 ~ Holiday
Home Tour
December ~ Holiday
Potluck

THE WINTER/ SPRING ADULT LEARNERS INSTITUTE CATALOGS ARE COMING!!!!

Church music, Tin Pan Alley, fly fishing, old monuments, Mexico on a bike, the US with a camera, wolves, football and mental health. ALI will be offering all these and more from mid-February through late May. Beginning at the end of this month, the ALI Winter/Spring catalog will be showing up in mailboxes, grocery stories, libraries and a variety of other venues in the area, but it will also be available on ALI's new web site.

You can begin registering for one class or as many as your fancy

directs beginning as soon as the catalog hits your hand... or your computer. There are two ways to do that. One is by simply filling out the registration form inserted in the paper catalog and mailing it to ALI, PO Box 134, Chelsea, MI 48118. The other way is by accessing our new web site at info@ALIMichigan.org As you will see in both formats, the registration fee has been eliminated and the fee for each class has been minimally increased to make up for that cut. You will now pay

a single fee for each class, depending on the number of sessions for that class. We hope this new structure will make it easier and more transparent to sign up for ALI classes.

Registrations will begin to be processed beginning in early February and classes will begin February 21.

As usual, ALI classes provide the chance to meet friends you never thought you had, and the intellectual stimulation they deliver will last longer than the current frigid temperatures.

Kira Grifka Chelsea 2023 Citizen of the Year

► continued from page 1
By Aimee Bingham
anbingham@gmail.com

The Chelsea Area Chamber of Commerce recently announced its 2023 Citizen of The Year, Kira Grifka. "The award is presented to people that demonstrate, over the past year, a commitment and involvement in our community with the selfless intent to improve the quality of life for all of the citizens of Chelsea," according to the Chelsea Michigan Instagram page.

The page does not mention that Kira is the first teen to be awarded The Citizen of the Year at just 16! Kira is a sophomore at Chelsea High School.

I naturally wondered what Kira had done at such a young age to receive the honor. Kira works, attends school, and participates in a plethora of civic-minded groups including; the Diversity and Social Awareness Club, SAGA, Interact, and the Chelsea Youth Orchestra, which performs all over the Midwest and has traveled to Spain and will be leaving the country to play again in the next few years.

Aside from having an impressive resume of work within the community, Kira made a big impact on the community

in 2023, which is an integral part of getting the recognition. According to the Ann Arbor News, "A Chelsea High School student was arrested in connection with the alleged sexual assault of two other students, and police are working to identify additional victims or witnesses. Samuel Dodge Nov 2022" The assaults left an impact on Kira. She wanted to make a change. Certainly not an easy thing to do for a 15-year-old, or for anyone for that matter. Kira created SASH Chelsea, which she is currently turning into a local not-for-profit called SHAPE, which stands for Sexual Harassment and Assault Prevention Education. The organization meets in the Chelsea library. Meeting topics include; Consent, stalking, Assault dynamics, healthy versus unhealthy relationships, and domestic violence. These meetings are not just for women. If we haven't learned through watching the news, young men can be victims too. Beyond the possibility of being victims, as the mother of two young men in a changing world, I felt I needed to protect them from accidentally finding themselves in trouble. This is not the same world in which I grew up and it is

wise to educate and prepare young men to not think something is innocent and wind up permanently on a list. We, as moms, can raise boys who respect themselves and women, but we may need a little help and SASH does just that. Kira also has contact posters for an SA hotline for both men and women posted at the school.

As SASH evolves into a local not-for-profit, Kira has big plans to continue with work and move the group forward. She'd like to have activities for teenagers, and fundraising nights to educate, and provide awareness and engagement for local youth. Kira has big personal plans too. She'd like to start a dual enrollment so she can graduate with an associates degree in graphic design. She'd like to travel and then go to college with a major in teaching and a minor in graphics design. Based on her amazing accomplishments as a Freshman and Sophomore, I expect big things from Kira in the future. Congratulations on a well-earned honor! To learn more about SASH and soon SHAPE visit: https://www.instagram.com/sash_chelsea?utm_source=ig_web_button_share_sheet&igsh=ZDNlZDc0MzIxNw==.



**Residential
& Commercial
Licensed & Insured
28 Years
in Business**



— Ann Arbor and Jackson Showrooms —

LET US HELP!
Call or visit today

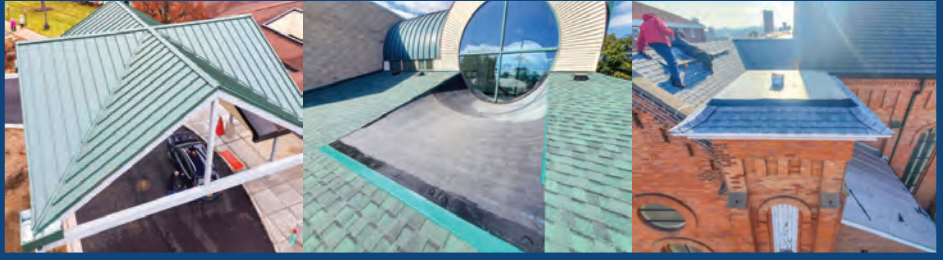
JACKSON

517.784.0463
1710 E. High St.

ANN ARBOR

734.882.2137
6055 Jackson Rd.

billywhiteroofing.com | Commercial & Residential
Licensed & Insured



**Individual and
Couples counseling**
"Specializing in the concerns
of Adolescence"

- Depression
- Anxiety
- ADHD
- High functioning Autism



Namaste Family Services, LLC
Michael Patterson, LMSW
734-231-0659
mpatterson.msw@gmail.com
namastefamilyservices.org

Serving Western Washtenaw and Jackson counties

**UMRC
PORTER HILLS
Foundation**

"Every day, I am thankful
for people like you who
support the Benevolent
Care Fund."



Your gift to the UMRC-Porter Hills Foundation
Benevolent Care Fund means the world to our qualified
residents who have outlived their resources.
Even better, your gift will be matched, dollar for dollar!

Make your secure online donation **TODAY** at
Foundation.UMRCPH.org
Or, to learn more, call **734.433.1000 ext. 7397**

HEYDLAUFF'S APPLIANCES HOSTING CHEF SERIES #5



Photo of Jake & Marty courtesy of Jacob Osburn, Kitchen Little

continued from page 1
D&B Strategic Marketing
doris@dandbmarketing.com
Heydlauff's Appliances
sales@heydlauffs.com

Chef Series #5 will take place on Saturday,

January 20 from 11:00 am to 1:00 pm, in Heydlauff's Appliances New Living Showroom. The Chef Series features local chefs on the 3rd Saturday of each month.

Chef Series #5 will feature Jacob Osburn,

owner of Kitchen Little LLC. Space is limited, contact sales@heydlauffs.com, or call 734-475-1221.

Chef Jake Osburn has developed his passion and talent for preparing visually stunning

and delectable dishes from the time he began helping his mother in the kitchen as a young man. After receiving his culinary education at Sullivan University in Louisville, Kentucky, Chef Jake amassed a wealth of experience in the food and hospitality industry including a bean-to-bar chocolatier in Asheville, North Carolina; a sous chef in the Great Smoky Mountains in Waynesville, an innkeeper and event manager in Ann Arbor, Michigan; and as director of Michigan ProStart, a career and technical education program for high school students funded by the Michigan Hospitality Foundation.

In December 2020, Chef Jake founded Kitchen Little, LLC, a private chef services and wholesale food production company based out of the kitchen at Agricole Farm Stop in Chelsea, Michigan.

Join Chef Jake for a hands-on, collaborative preparation of the

famous dish ratatouille at the Heydlauff's Chef Series on January 20, 2024, from 11-1 pm.

To learn more visit Kitchen Little's Facebook Page, <https://www.facebook.com/KITCHENLITTLELLC/>,

Mark your calendars for the third Saturday of every month 11am - 1pm. February 17 Chef Emily, Chelsea Alehouse will be featured.

For more information about Heydlauff's Appliances and the upcoming Chef Series, please contact sales@heydlauffs.com, or call 734-475-1221.

Heydlauff's Ap-

pliances has provided excellent customer service, professional delivery, appliance service, and installation since 1928. Their retail store is located on Main Street in historic downtown Chelsea with a 12,000-square-foot warehouse in Chelsea's Industrial Park, less than one mile from their downtown showroom. Heydlauff's team of experienced service technicians is seasoned and well-versed in appliance repair. For more information contact sales@heydlauffs.com, and visit their website at www.heydlauffs.com.



214 E. Middle St. • Chelsea • (734) 475-1551

Cole Funeral Chapel is a family-owned funeral home committed to caring for your family. Our mission is to meet your needs whatever they may be. We provide a wide range of services, including cremation, green burial, and traditional funerals.

www.colefuneralchapel.com



Allen C. Cole, Funeral Director
& Wendy Cole Office Manager



**Laura Perkins
Animal Behavior**

CPDT-KA, M.S. Applied Behavior Analysis

www.lauraperkinsanimalbehavior.com
lauraperkinsanimalbehavior@gmail.com
309-370-8233



Chelsea Consignment
QUALITY APPAREL & HOME DECOR



CURRENTLY ACCEPTING:
We are currently accepting Fall/Winter clothing and accessories. Anything that can be worn over the next 60 days.

Designer and Name Brand Labels Available

New Hours
Mon-Wed 10-5
Thur-Sat 10-6
Sun 12-5

104 E Middle Street Suite 1A
Chelsea, MI 48118
734-433-9730
www.chelseaconsignment.com



Serving The Chelsea Area Since 1951
(734) 433-1831
PROMPT SERVICE!

- RESIDENTIAL - COMMERCIAL - INDUSTRIAL -

No Job Too Small or Too Big


COMPLETE EXCAVATING SERVICES

General Excavating - Earth Moving - Trucking
Screened Top Soil - Sand - Gravel Driveway
Landscape Materials - Basements - Site Development

SEPTIC SYSTEM SERVICE


Septic Tanks Cleaned - Installed - Repaired
Drainfield Installed - Repaired
Other Excavating

<http://www.bollinger-septic.com/>




Chelsea Guardian

For Classified,
Church Directory
or General Advertising
Call: 734-636-3779 or email
tomchelseaguardian@gmail.com
or charlachelseaguardian@gmail.com



Please like and share our
Facebook Page: Chelsea Guardian

Mission Statement:
Hard work, good work and creating
and fostering great relationships are
the keys to community success.



SAVINGS IN CHELSEA

**YOUR
AD HERE**

2x3 for \$50 per week, 4 week run = \$200 total
2x2 for \$25 per week, 4 week run = \$100 total

Call: 734-636-3779 or email
charlachelseaguardian@gmail.com

SAVINGS IN CHELSEA

**YOUR
AD HERE**

2x3 for \$50 per week, 4 week run = \$200 total
2x2 for \$25 per week, 4 week run = \$100 total

Call: 734-636-3779 or email
charlachelseaguardian@gmail.com

SAVINGS IN CHELSEA

**YOUR
AD HERE**

2x3 for \$50 per week, 4 week run = \$200 total
2x2 for \$25 per week, 4 week run = \$100 total

Call: 734-636-3779 or email
charlachelseaguardian@gmail.com

SAVINGS IN CHELSEA

**YOUR
AD HERE**

2x3 for \$50 per week, 4 week run = \$200 total
2x2 for \$25 per week, 4 week run = \$100 total

Call: 734-636-3779 or email
charlachelseaguardian@gmail.com



**Royek Family
Chiropractic**

Matthew Royek, DC
1307 S. Main St. Ste C
Chelsea MI 48118

Open 5 days a week plus 2 Saturdays each month!

Celebrating 5 years of providing chiropractic
care to families in the Chelsea area!

Call us at 734-433-1376
Visit us at royekfamilychiropractic.com



CHELSEA BULLDOGS WRESTLING TAKE 1ST PLACE AT 2024 COMSTOCK FRIDAY NIGHT INVITE!!

► continued from page 1

From: Chelsea Bulldogs	man, Hunter Burk.	Additional placers:
(3x) 1st place @ Comstock - Victor Radu	2nd-Lucas Racine, John Chapman, Ethan Povlich.	Collin Beckel, Chase Messersmith, Donovan Fisk.
1st-Kamren Chapman,	3rd-Evan Muchler, Massimo Culgliari, Thomas Shemwell.	GO BULLDOGS!!!

WASHTENAW UNITED TOPS DIVISION, SPLITS WEEKEND CONTESTS



Washtenaw United Girls Hockey team entered this weekend's competition atop Division 2 in the Michigan Girls High School Hockey League.

On Friday, January 19 they hosted an exhibition game against Division 1 leaders Grosse Pointe South.

A strong defensive effort sparked Washtenaw in the first period. The entire defensive unit stepped up and goaltender Trista Tracy (Chelsea '25) blanked GPS's relentless offensive attack.

The United began the 2nd period with a rush led by Dexter senior Raegen Kopitsch and continued battling hard against GPS's offensive pressure. But GPS got on the board at 9:42, followed by another goal less than a minute later.

Washtenaw finished the 2nd period and started the 3rd on the penalty kill. A clean win on the faceoff by Chelsea Senior Cecilia Henriksen in GPS's defensive zone led to a shorthanded goal by Daphne Grant (Dexter '25) to bring Washtenaw within 1.

However, GPS scored a power play goal at 13:05 and then put a screened shot past Tracy at 5:19 to defeat the United 4-1.

Saturday's contest saw a league matchup against the Northville Mustangs.

Henriksen opened the scoring at 13:44 in the first, assisted by Grant and Abby Schroeder (Saline '26). Juliana Marini (Saline '25) followed up with another Washtenaw goal two minutes later, with an assist to Chloe Dillen (Saline '24).

In the second, Kendra Wagner (Saline '25) scored Washtenaw's third goal with assists from Rylee Kennedy (Milan '24) and Lilly Schlack (Saline '26). Next Sydney Clark (Saline '25) banged in a goal, with another assist by Kennedy, followed by a goal from Schlack with assists to Henriksen and Kennedy.

In the third, Clark scored Washtenaw's sixth goal, assisted by Schlack. Then Grant knocked in a power play goal with assists to Clark and Henriksen before Kopitsch knocked in the 8th goal, assisted by Henriksen, to end the game 8-0.

It was all Washtenaw as the United outshot the Mustangs 33-3 and Goalie Tracy picked up her fifth shut-out this year in league play.

Follow Washtenaw United on Facebook, Instagram, and X.

Effective and Objective Communication within an Intimate Relationship Part Two

Defensiveness and wanting to win the argument

By: Michael J. Patterson, Namaste Family Services, LLC

Everyone wants to be right. Even when we know we may be wrong. One of the most significant problems in an intimate conflict is on or both parties becoming defensive. IT is an easy attitude to fall into. Our ego's want to feel superior over the other person, especially a loved one. The difficulty with this posture is we lose the ability to objectively listen to the other's point of view and instead we are strategizing how to either convince the other we are right, or to win despite the outcome. When couples become defensive, they minimize their ability to rationally work on a problem or issue with the other. Another danger is when we become defensive we may say to do things that we regret. Tempers may increase and then we enter a state of irrational conflict. Most times a rational outcome is not had. Instead feelings are hurt, and distance grows, possibly along with trust.

So how does one not become defensive and have the strong need to win? First, you have to recognize when you cross the line of discussion and problem solving to defending you argument. Being tense, raising of your voice, anger intrudes your feeling state, and objectivity leaves. These are all signals that you are leaning towards being defensive. Other triggers may also be present. Anxiety, sadness, rage.

Other indicators of defensiveness are when old hurts or arguments enter into the conflict versus staying on track for the initial issue that needs resolution. Bringing up the past is not productive. There may be a rational to resolve past issues but that is a separate discussion, not the one in which you are currently engaged.

When you recognize you are becoming defensive it is ok to take a time out. The time out is to be used to calm down and return to a rational state; not try to figure out a better argument to win. Going back to the skill of empathy and validation will help you to maintain a rational perspective.

Remember why you are connected to the other person and how you feel deep down with them. This can become clouded in anger and is easy to forget when we are out to conquer the other person.

Many grew up with the need to defend themselves from real hurts or trauma. We developed ways to control the situation and for the most part keep us safe. The problem with this is your strategies are developed with an immature mind and lose their effectiveness as an adult. If this is true for you, then you may want to address the past with a counselor.

Humility or being humble is a mindset that can help decrease the need to win. Keep in perspective who you are in conflict with and how much they mean to you. Everyone will argue and become defensive. It human nature. However, with mindfulness you can reduce or eliminate the desire to become defensive or win. This allows you to work on the issue with a goal of a satisfactory outcome.

continued on page 6



January Events

Yoga for Parkinson’s Disease [PD]* (CHE) Tuesdays, January 4–25 • 2:00pm–3:00pm

People with PD have been shown to respond favorably to the practice of Yoga. This class is suitable for people with PD as well as their caregivers. Yoga can ease symptoms by improving core strength, flexibility, and balance. Yoga may also decrease stress and bring calm to a busy mind, allowing for deeper relaxation. In addition to postures, breathing techniques will be shared to apply anytime during your day that may help with one’s symptoms. All levels are welcome, modifications will be given.

Strengthening Your Posture (CHE) January 9–February 13 • 12:00pm–1:00pm

These 6-week sessions will focus on strengthening your back, shoulders, and core muscles, which are all essential to standing with proper posture and preventing lower back pain.

Strengthen Your Core Class (CHE) January 9–February 13 • 1:00pm–2:00pm

Participants will learn how to break down their movement to engage their muscles and then advance their core as they progress.

All About Balance (DEX) Thursdays, January 11–February 15 • 12:00pm–1:00pm

This class is designed to teach you to maintain balance by strengthening key muscles responsible for keeping you upright, particularly focusing on your legs and core. The emphasis lies in enhancing stability to prevent falls.

Training Your Pelvic Floor (DEX) Thursdays, January 11–February 15 • 5:00pm–6:00pm

This class improves the strength and mobility of the pelvic floor, effectively enhancing the function of multiple systems. Members learn to contract and relax pelvic floor muscles in relation to other muscles.

Healthy Eating in the New Year (CHE) January 31 • 6:00pm

Learn and discuss ways to change your eating habits in the New Year.

*Community welcome!

COMING SOON

CPR Class (CHE)
February 26

St. Patrick’s Day
Indoor Triathlon (DEX)
March 17



Effective and Objective Communication within an Intimate Relationship Part Two

Defensiveness and wanting to win the argument

➤ continued from page 4

When emotions run high in intimate conflict it is easy to fall into ways of arguing that are disrespectful, nonproductive, and cause hurt emotions. Many would not use language or tactics to argue with a friend that we would use with an intimate partner. In addition, when mean spirited conflict erupts, it becomes irrational and no solution is found to the original issue. The concept

of using fair fighting ground rules allows each individual to get their view heard and decreases tension.

The use of fair fighting is not new. In a professional environment, most will naturally word their concern or view in a manner that follows the decorum within the business. We also would not sue derogatory remarks towards close friends. Yet, in a intimate conflict it is easy to fall into the

mindset of extreme anger or attack using mean spirited words or name calling.

The first rule is easy. Be respectful of your partner. Even with anger we can remain respectful of the others emotions and dignity. Name calling goes nowhere and is a childish act. Excessive use of vulgar language is another way of showing lack of respect.

The next rule is to remain on topic. It is easy to add into the

fight other issues that really have minimal if any bearing on what the conflict main focus is. This also means that you do not bring up the past. If there are unresolved issues, then address them separately, not during the current argument.

Validate the other persons' emotions and view. Even if you do not agree, validation helps to increase understanding and helps to decrease defensiveness.

Use active listening techniques (we will touch on this later). So that there is a better understanding. Ask for clarification of the other person's statement.

Be open to compromise and have an

open mindset.

Maintain a calm and respectful tone of voice. No Yelling!

These are the basics of using fair fighting techniques when you have a disagreement with your intimate partner. The best thing to remember is how you wish to be spoken to and observe that when discussing the issue with your intimate partner.

CHelsea DISTRICT LIBRARY

Copies available at CDL or on Mobile CDL!

Join the Community Read!

HOW THE WORD IS PASSED

A RECKONING WITH THE HISTORY OF SLAVERY ACROSS AMERICA

CLINT SMITH

"We need this book." —IBRAHIM X. KENDI

WASHTENAW reads | ChelseaDistrictLibrary.org

2024 CALENDAR OF EVENTS



Business Breakfasts
Jan 11th | 7-9am
April 11th | 7-9am
July 11th | 7-9am
Oct 10th | 7-9am

Wellness After Hours
Jan 17th | 5-6:30pm

Chocolate Extravaganza
Feb 10th

Curling Fest
Feb 24th | 8-11pm

Annual Meeting
March 6th | 6-8pm

Sounds & Sights on Thursday Nights
June 6th-July 25th & Oct 24th
6:30-8:30pm

Sounds & Sights Festival
July 26th-27th

Community Picnic
Aug 10 | Noon to 2pm

Golf Outing
Sept 4th | 7:30am-3pm

Backyard Beer Garden
Oct 12th | 3-10pm

Hometown Halloween
October | All Month

Wine, Women, & Shopping
Nov 8th & 9th

Hometown Holiday
December | All Month

Sculpture Walk
All Year

Chelsea Trail Challenge
Feb 1st-Nov 30th

Scan the QR Code or visit chelseamich.com/calendar/ to view a full calendar of events.



Boldly Generous Rates

Uncomplicated, Convenient Service



BEST-IN-STATE CREDIT UNIONS

Forbes 2023

POWERED BY STATISTA

Amer1can CREDIT UNION

US-12 Chelsea Branch Now Open!

12855 Old US-12 E - Suite 7

american1cu.org | (888) 213-2848

Boldly Generous. Convenient. Uncomplicated.

Chelsea Branch Inside Polly's Country Market

1255 South Main St. | (734) 475-3416

*Visit american1cu.org for full details!

Federally Insured by NCUA | Equal Housing Opportunity

Chelsea Guardian

January 26, 2024

Page 6

WEBSTER TOWNSHIP COMPLETES LAND PRESERVATION PROJECT



BARRY LONIK
TOWNSHIP LAND
PROTECTION
CONSULTANT
(734) 223-2321

The Webster Township Farmland and Open Space Preservation Program recently closed on a conservation easement purchase from the Dale and Marilyn Larson Trust.

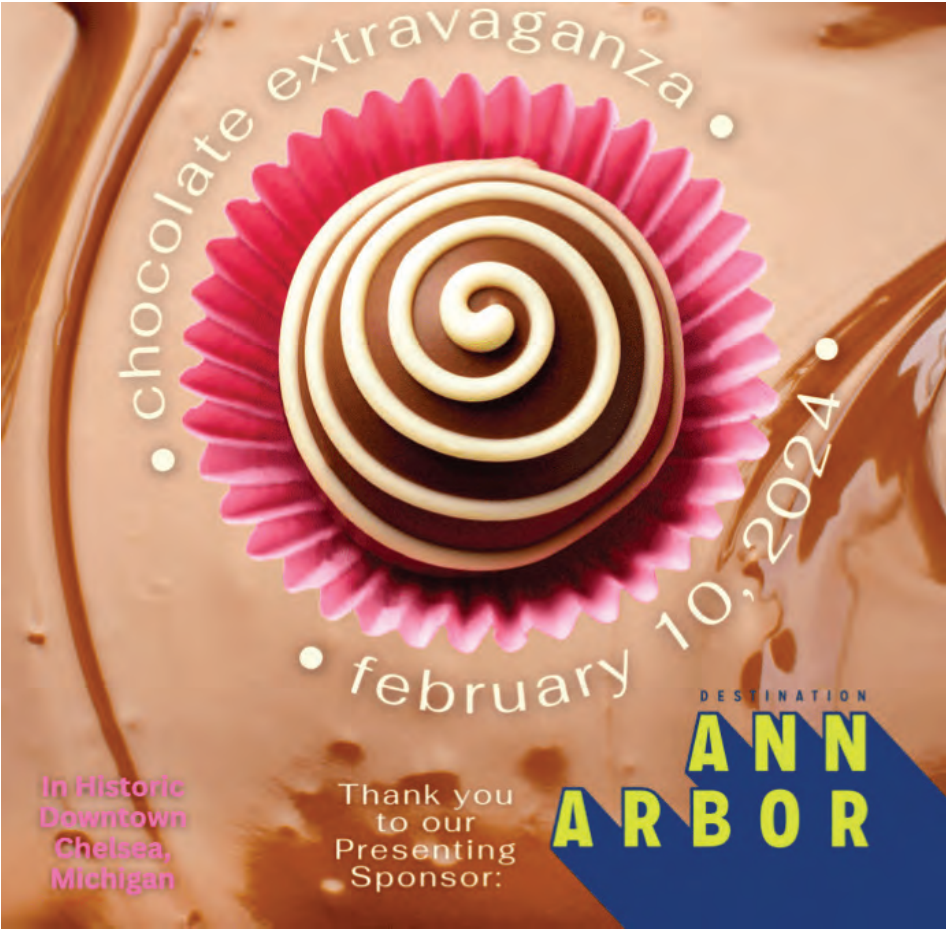
The property is just under 30 acres in size with frontage on the north side of Joy Rd. between Maple Rd. and Jennings Rd. It is comprised almost entirely of prime and locally important agricultural soils, along with nine acres of wetlands and frontage on Brookwater Creek. The property is in the vicinity of one of Webster Township's large blocks of permanently protected land. The conservation easement ensures that the land will never be developed but it remains in private ownership and is not open to the

public. In 1969, Dale and Marilyn Larson purchased 2886 W Joy Rd, Ann Arbor, a 40 acre parcel located in Webster Township. In 2016, 10 acres were sold which included the house (circa mid-1800's) and outbuildings. The remaining 30 acres have been kept as active farmland and fallow fields.

Conservation easements are permanent deed restrictions on the use of a property. Purchasing easements costs less than buying the property, and keeps the property on the tax rolls and contributing to the local economy.

In addition to Webster Township's dedicated land preservation millage, funding support was supplied by the City of Ann Arbor Greenbelt program and the federal Resource Conservation Partnership Program. Webster's share was 8% of the appraised value

purchase price. Webster Township's land preservation program is funded by a dedicated millage which voters passed initially in 2005 and renewed twice, all by large margins. The Township has attracted over \$15 million of matching funds from other sources, a rate of over \$5 to \$1 of its own. With this project the Township program has been involved in protecting 2,729 acres, with more projects set to close in the coming months.



The Washtenaw County Youth Commission and League of Women Voters Student Leaders Presents...

The Civic Engagement Celebration

When?

- February 11th from 2-4 pm

Where?

- The Neutral Zone (Downtown Ann Arbor)

Join us to...

- Learn about **new voting policies** in Michigan from a **nonpartisan presentation**
- Learn about ways **you can engage in** democracy in **your community!**
- Partake in screen printing, trivia, and more! **Prizes available!**

RSVP HERE:

<http://bit.ly/3HFDkk5>

WV LEAGUE OF WOMEN VOTERS OF WASHTENAW COUNTY Washtenaw County Youth Commission

PLEASANT TREES

CAN YOU GUESS THE MYSTERY STRAINS?

JANUARY 1ST - JANUARY 31ST

4 MYSTERY STRAINS ONE GRAND PRIZE

GUESS THE CORRECT NAMES OF ALL 4 MYSTERY STRAINS FOR A CHANCE TO WIN

A TRIP FOR TWO TO MIAMI, FLORIDA.

**PARTICIPANTS WHO GUESS THREE OF FOUR STRAINS CORRECTLY
WILL BE GIFTED A PRIZE FROM PLEASANT TREES.**

GRAND PRIZE INCLUDES AIRFARE AND HOTEL FOR TWO PEOPLE. SELECT TRAVEL DATES EXCLUDED. MUST BE 21+ TO PARTICIPATE AND WIN. MICHIGAN RESIDENTS ONLY.

VISIT US AT ANY OF OUR FIVE LOCATIONS TO PARTICIPATE
MOUNT CLEMENS • HAMTRAMCK • LINCOLN PARK • HOUGHTON LAKE • EAST LANSING

**FOR MORE INFORMATION VISIT
ENJOYPLEASANTTREES.COM**

IT IS ILLEGAL TO DRIVE A MOTOR VEHICLE WHILE UNDER THE INFLUENCE OF MARIJUANA. FOR USE BY INDIVIDUALS 21 YEARS OF AGE OR OLDER OR REGISTERED QUALIFYING PATIENTS ONLY. KEEP OUT OF REACH OF CHILDREN. WARNING: USE BY PREGNANT OR BREASTFEEDING WOMEN, OR BY WOMEN PLANNING TO BECOME PREGNANT, MAY RESULT IN FETAL INJURY, PRETERM BIRTH, LOW BIRTH WEIGHT, OR DEVELOPMENTAL PROBLEMS FOR THE CHILD.

The Purple Rose Theatre Company Extends “Diva Royale” Through March 2, 2024!

Smash Hit “Diva Royale” by Jeff Daniels continues in the New Year.



From: Katie Hubbard

The Purple Rose Theatre Company (PRTC) announces the extension of their hit comedy, “Diva Royale” by Jeff Daniels. Also, Friday matinees have been added to the weekly run. Extension tickets are on sale now. Also worth noting, there are two casts for “Diva Royale”. If you have seen one cast, come back and see the other!

First staged at The Purple Rose in 2018, “Diva Royale” is an evening of side-splitting hilarity that follows three midwestern stay-at-home moms whose love for Céline Dion makes them plan a last minute trip to New York City. With the return of the original cast, this crowd pleasing comedy is guaranteed to make you laugh ’til you cry.

This production of “Diva Royale” contains adult content and may not be suitable for children under the age of 13.

Extension performances of “Diva Royale” run from Wednesday, January 3 through Saturday, March 2, 2024. Performances Days/Times- Wednesdays 3pm, Thursdays 3pm, Fridays 3pm & 8pm, Saturdays 3pm & 8pm, and Sundays 2pm.

Directed by Jeff Daniels, Assistant Directed by Lucas Daniels, with Intimacy Director, Alexis Black,

the cast features Connor Allston (Clinton Township), Caitlin Burt (Farmington), Caitlin Cavanaugh (Manchester), Rusty Mewha (Plymouth), Rhiannon Ragland (Flint), Kristin Shields (Ann Arbor), Kate Thomsen (Portage), and Meghan VanArsdalen (Ann Arbor). Set design by Brian D. Dambacher, properties by Danna Segrest, costumes by Shelby Newport, lighting by Stephen Sakowski and Dana L. White, and sound by Robert W. Hubbard. Karen Anne George is the stage manager.

“Diva Royale” playwright and director, Jeff Daniels’ career as an actor, playwright, musician, and director, spans nearly 50 years in the industry. For his acting, Jeff has been nominated for five Golden Globes, five Emmys (winning for “Newsroom” and “Godless”) and three Tonys. He has written twenty full length plays that have world premiered at The Purple Rose. His “Onstage & Unplugged” performances have wowed audiences on The Purple Rose stage with the fundraising proceeds going directly to the PRTC. Jeff’s directing credits include the PRTC production of Lanford Wilson’s “The Hot L Baltimore” (1997) and two of his own plays, “Boom Town” (1998) and now “Diva Royale”.

On film, Jeff wrote, directed, and starred in two independent features: “Escanaba in da Moonlight” (2001) and “Super Sucker” (2002), both shot in Michigan.

The production sponsors for “Diva Royale” are Chelsea State Bank, CMRG and Secret Crisis Comics. Underwriting support for the season comes from Michigan Arts and Culture Council, National Endowment for the Arts, The Schubert Foundation, and The Matilda R. Wilson Fund. Media sponsors include JTV and Michigan Radio.

Ticket Information

All performances will be held at The Purple Rose Theatre Company, 137 Park Street, Chelsea, Michigan 48118. The performance calendar can be found at <https://www.purplerosetheatre.org/calendar/>.

Ticket prices start at \$30 with special discounts for seniors, patrons 30 years or younger, members of the military, teachers, and groups (12+). For more information or to make reservations call (734) 433-7673 or go to <http://www.purplerosetheatre.org>.

New to the 2023/2024 season, all PRTC productions will be staged in the round; with seating on 4 sides of the stage. This new configuration will add 40 seats to the theater space.



Chelsea Police Department Weekly Summary

Incident #: 24-176
Date: January 15, 2024
Location: 300 Block of Wilkinson St.
Time: 12:17 pm

INFORMATION: While at the station a walk-in complaint came into the front desk to report a fraud. The complainant stated that over the course of the last six (6) months she had discovered that she been defrauded under false pretenses out of a large amount of money. The complainant stated that she had sent multiple Apple gift cards to the person she had been communicating with online. The complainant stated that she had also been directed to send pictures of her personal identification information to the suspect as well. At the time of the report there was no further information available on the true identity of the suspect. The case remains open pending further investigation.

Incident #: 24-227
Date: January 19, 2024
Location: 100 block of Wilkinson St.
Time: 6:01 pm

INFORMATION: While at the station an officer took a fraud complaint by phone. The complainant stated that approximately 4-5 months ago he was contacted by a subject who was representing themselves as a well-known sports entertainer. The suspect told the complainant that he was qualified for a “WWE Fan ID Card”. The complainant stated that in order to receive the ID Card he was directed to send money on multiple occasions to the suspect(s) first via Cash App and then via PayPal with the promise of receiving the Fan ID Card. The complainant stated that he had contacted the WWE and they told him that there was no such thing as a “WWE Fan ID Card” and that he had most likely been the victim of a scam. At the time of the report there was no further information on the true identity of the suspect(s). The case remains open pending further investigation.

Incident #: 24-240
Date: January 20, 2024
Location: 1100 block of S. Main St.
Time: 10:54 pm

INFORMATION: While on routine patrol officers were dispatched to the 1100 block of South Main Street for the report of a fight in progress. The caller stated that the male suspect was armed with pepper spray and was threatening to spray the staff & patrons. Upon arrival the officers located the suspect’s girlfriend outside the business, she was highly intoxicated and when questioned stated that she had not been involved in the altercation. The officers located the suspect, identified as a 25-year-old Chelsea man and he was searched and detained pending investigation of the incident. The suspect refused to give a statement to the officers about what had taken place. The officers then conducted interviews with the victims and witnesses about what had taken place. After gathering witness statements, the suspect was placed under arrest for felonious assault and transported to the Washtenaw County Jail where he would be held. The case was submitted to the Washtenaw County Prosecutor’s Office for review and a two (2) count felony warrant for Assault with a Dangerous Weapon was authorized. The case was closed with the issuance of the warrant.

DIVA Royale

WRITTEN & DIRECTED BY JEFF DANIELS



Extended thru March 2, 2024!
PurpleRoseTheatre.org
734.433.7673